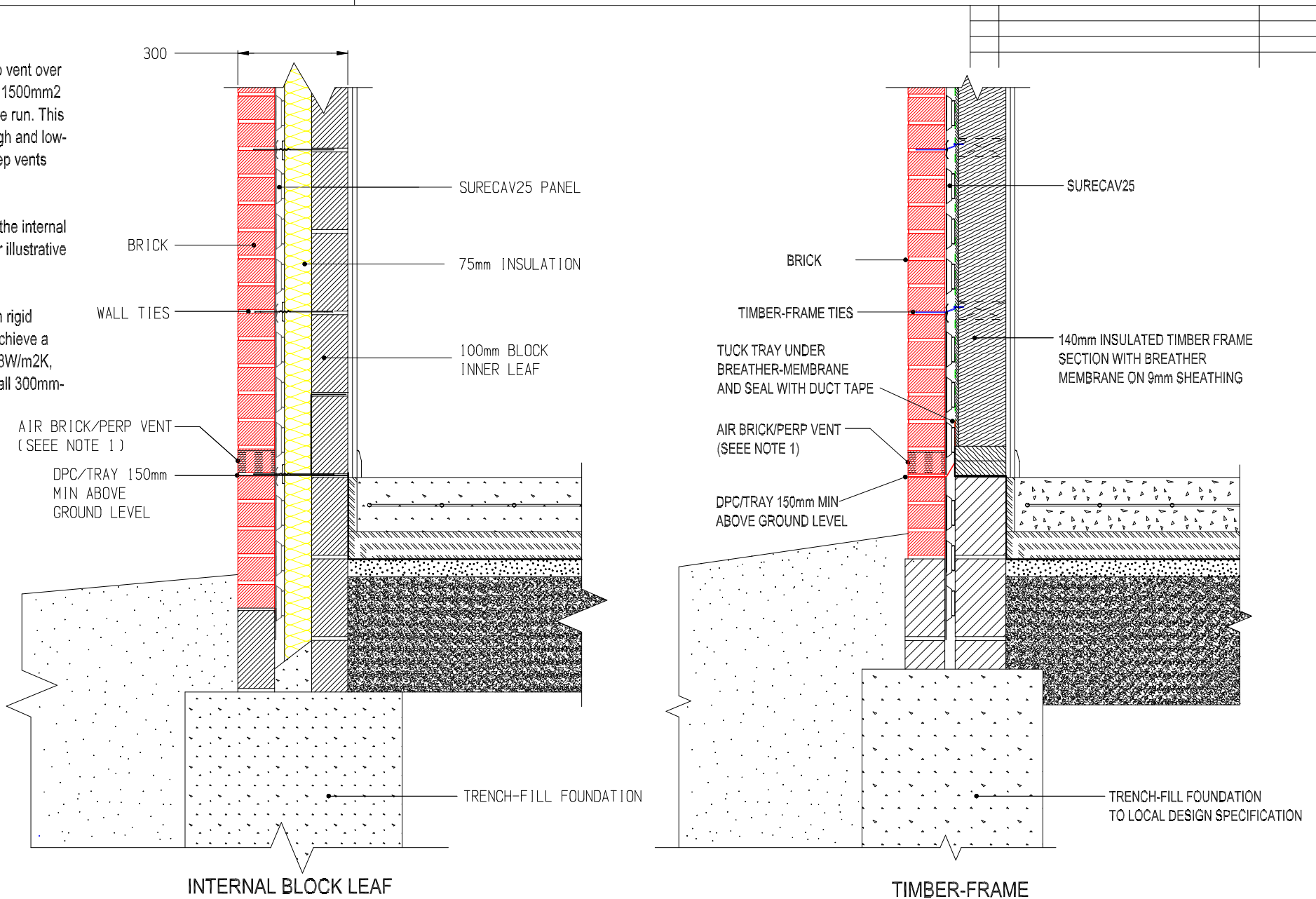


**SURECAV SPACER SYSTEM**

COPYRIGHT © 2022 SURECAV LTD. FOR MORE INFORMATION VISIT [WWW.SURECAV.CO.UK](http://WWW.SURECAV.CO.UK)

**NOTES**

1. Install an air brick/perp vent over the tray to ensure min.1500mm<sup>2</sup> air flow per linear metre run. This can be achieved by high and low-level vents and air/weep vents at lintels.
2. The design shown for the internal floor construction is for illustrative purposes only.
3. SureCav25 with 75mm rigid insulation board can achieve a U-Value as low as 0.18W/m<sup>2</sup>K, still maintaining an overall 300mm-wide wall.



SURECAV25

TITLE

TYPICAL DETAIL OF BLOCK INNER LEAF WITH BRICK OUTER LEAF AND PARTIAL FILL INSULATION

DRG NO.

CA- 180822-1